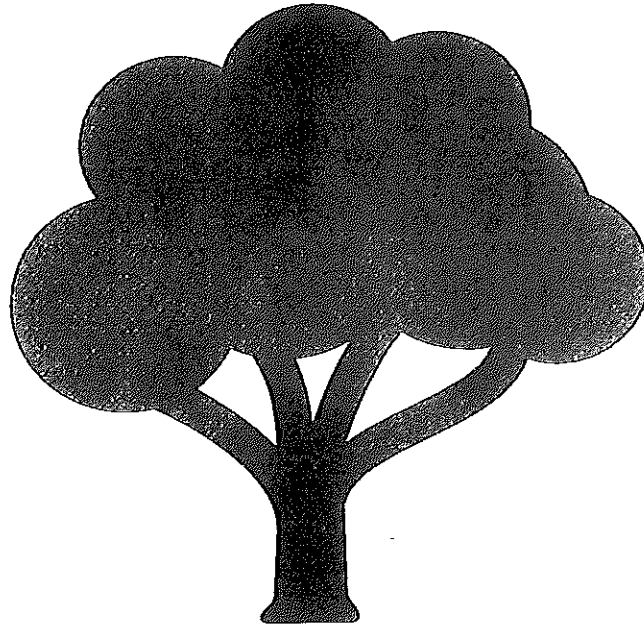


Village of Schoolcraft
Community Recreation Plan
2018-2022



Prepared for:
Village of Schoolcraft

Prepared by:
Wightman & Associates, Inc.
2303 Pipestone Road
Benton Harbor, MI 49022

In Accordance with:
Michigan Department of Natural Resources
Guidelines for the Development of
Community Park, Recreation, Open Space, and
Greenway Plans

DRAFT
March 2018

Table of Contents

I. INTRODUCTION.....	3
II. COMMUNITY DESCRIPTION	4
A. History & Regional Context.....	4
B. Area to be Served.....	4
C. Plan Focus.....	4
III. ADMINISTRATION STRUCTURE.....	5
A. Structure & Functions	5
B. Annual Budget	6
C. Funding Source	6
D. Volunteer Programs.....	6
E. Community Relationships.....	6
IV. RECREATION INVENTORY.....	7
A. Village Owned Recreation Facilities	7
B. Accessibility Evaluation	7
C. DNR Recreation Grant Inventory	7
D. Recreation Facilities Not Owned by the Village	8
V. PLANNING & PUBLIC INPUT PROCESS	9
A. Planning Process.....	9
B. Public Input Process	9
VI. GOALS AND OBJECTIVES.....	11
VII. ACTION PROGRAM	12

Appendices

APPENDIX A: Village of Schoolcraft Park Location Map

APPENDIX B: Survey Sample, Results & Comments

APPENDIX C: Notice of Availability for Public Comment, Notice for Public Meeting & Affidavits of Publication

APPENDIX D: Meeting Minutes

APPENDIX E: Official Resolution of Adoption

APPENDIX F: Copies of Letters Transmitting Adopted Plan to County & Regional Planning Agencies

APPENDIX G: Village of Schoolcraft, MI 2018 Master Plan

I. INTRODUCTION

This Community Recreation Plan is a general, long-range development tool used to achieve and maintain a high-quality park, recreation and open-space system. It evaluates the needs of the community and makes strategic recommendations for recreation, beautification and economic development to be implemented over the next five years.

II. COMMUNITY DESCRIPTION

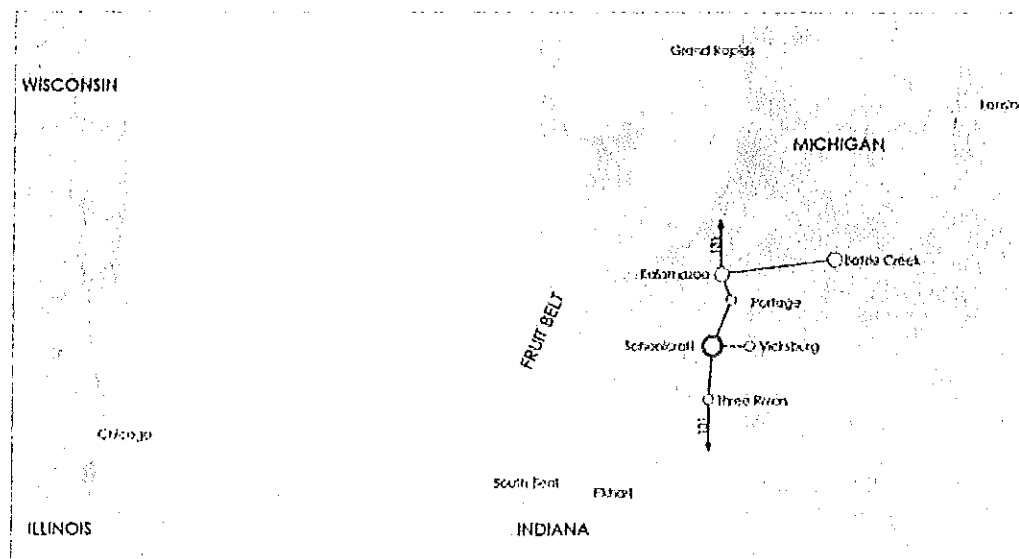
A. History & Regional Context

The Village of Schoolcraft was founded in October of 1831, six years before Michigan became a state. The Village was the first settlement in Kalamazoo County. Many of the existing lots throughout the neighborhoods surrounding the downtown remain from the original plats, and the original architecture of the homes and commercial structures reflect this heritage as well. In the 1840's, the Village was a stop on the Underground Railroad. Today, it is a stop along US 131, a major recreation and industrial highway through West Michigan which connects Grand Rapids and Kalamazoo with interstates 96, 94, 80, and 90, as well as northern Michigan. The settlement of Schoolcraft officially incorporated in 1866.

The Village of Schoolcraft is located in Kalamazoo County, approximately 13 miles south of the City of Kalamazoo. Schoolcraft Township surrounds the Village to the north, east, and south. Prairie Ronde Township borders the Village to the west. US 131 runs through the Village and connects it with the City of Kalamazoo and Interstate 94 to the north, as well as Three Rivers and the Indiana Toll Road (I-80/90) to the south.

B. Area to be Served

The service area is confined to the Village limits, covering approximately 1 square mile. Schoolcraft has a dense development pattern within Village limits, which has preserved quality agricultural land directly adjacent to neighborhood development.



VILLAGE OF SCHOOLCRAFT GEOGRAPHIC LOCATION MAP

C. Plan Focus

This plan was completed as part of a larger update of the Village of Schoolcraft 2018 Master Plan. This planning effort was completed to update the Vision for Schoolcraft. See the Vision Plan dated 2017 and the Master Plan dated 2018. The feedback from the Vision Plan was to create places for people and connection.

III. ADMINISTRATION STRUCTURE

A. Structure & Functions

The following section identifies the administrative structure for the Village of Schoolcraft. It also describes the functions regarding parks and recreation for the Village. The Village of Schoolcraft is a General Law Village with a Council/Manager form of government. The Village Council is the highest elected body and consists of a President and six Trustees. The Village President serves a two-year term, and the Village Trustees serve four-year terms. The Planning Commission is an advisory body to the Village Council.

The Village of Schoolcraft does not maintain a separate Parks and/or Recreation Department. Provisions of the Public Act 161 of 1911, authorizes municipalities to operate systems of public recreation and playgrounds. The Village of Schoolcraft has not formed a separate recreation commission, but instead has delegated the function of planning for parks and recreational programs to the Planning Commission.

The Planning Commission, under the provision of Public Act 285 of 1931, has responsibility for preparing a six-year capital improvement program for submission to the Village Council. Future needs are to be identified in this program in order to carry out the implementation of the Village's Land Use Plan. Recommendation for park acquisition, improvement and development should be an integral part of this program. Thus, the Planning Commission recommends to the Village Council a future program for Village parks within the financial capability of the Village. The final determination on funding, of course, rest with the Council.

The Planning Commission has both advisory and administrative responsibilities related to planning and zoning matters. Planning Commissioners are appointed for three-year terms. The Downtown Development Authority (DDA) was established in 2004 and is comprised of a nine-member board appointed for four-year terms. Their purpose is to provide a favorable environment for downtown businesses and residents, to assist and facilitate improvements along the US 131 corridor, to provide a means to implement economic revitalization in the central business district, and to build on the success and momentum created by these projects through maintenance, management, and leadership.

The following is the Organizational Chart for the Village of Schoolcraft:



IV. RECREATION INVENTORY

A. Village Owned Recreation Facilities

Leo Burch Park

Burch Park, called "The Park" by some, is a hidden gem tucked away west of 131. The park is approximately 1.6 acres in size and serves as community "front yard" as well as good place for children to play. The park serves the surrounding neighborhood, a ¼ mile service area reaches W Lyons Street to the north, N Cedar Street to the east, E Eliza Street to the south and Bernard Street to the west.

The park includes the following recreation facilities: 1 small grill that is worn out, 2 new metal 4' benches, 1 medium-sized wood gazebo that is good condition, and garbage containers. The benches are in mulch beds surrounded by plastic edging and the gazebo has a concrete pad on either side for access. The park has a playground area in mulch surrounding by plastic edging. The playground area includes newer playground equipment that includes climbing structures and slides, a swing set with 4 regular and 2 toddler swings, small-child play structures including a tunnel, a spring toy and a balance toy, and a plastic rock climbing structure.

A map of the parks located within the Village of Schoolcraft can be found in Appendix [Insert Letter].

B. Accessibility Evaluation

An accessibility assessment was conducted at the time of the recreation inventory. The Village of Schoolcraft has worked to include accessibility to the parks as they continue to update and further develop them. A brief description of the park accessibility is below along with a rating based on the following guidelines criteria.

- 1 = none of the facilities/park areas meet accessibility guidelines
- 2 = some of the facilities/park areas meet accessibility guidelines
- 3 = most of the facilities/park areas meet accessibility guidelines
- 4 = the entire park meets accessibility guidelines
- 5 = the entire park was developed/renovated using the principals of universal design

The Village of Schoolcraft will look to continued public comment throughout the implementation process, especially from those with special needs. Their suggestions play a key role in developing and implementing proposed barrier-free improvements.

Leo Burch Park

Burch Park is not easily accessible for all members of the community. The park lacks sidewalks connecting through the park as well as sidewalks connecting the park the surrounding sidewalk and roads. The playground area and the metal benches are not handicap accessible because they are within a plastic edged bed which one would have to maneuver over to access these areas. The playground equipment itself is not handicap accessible. There is opportunity to add sidewalks and ramps to provide barrier-free access to the benches, playground area and equipment. Leo Burch Park is rated a 2 as some of the facilities/park areas meet accessibility guidelines.

C. DNR Recreation Grant Inventory

The Village has never received funding from the Department of Natural Resources.

D. Recreation Facilities Not Owned by the Village

A variety of significant recreational resources are available outside the Village of Schoolcraft. The following is a brief description of some of the parks and recreational opportunities that are close by.

Schoolcraft Elementary & Middle School Grounds

The facilities surrounding the Elementary School and Middle School are located between E Lyons Street to the north, E Clay Street to the south, and N 14th Street to the east. The grounds provide softball fields, a basketball court, soccer fields, a football field and track and playground equipment.

Schoolcraft High School Grounds

The facilities surrounding the High School are located at the northwest corner of the intersection of S 14th Street and E Lyons Street. The grounds provide a football field, tennis courts, a baseball field, and a softball field.

Gourdneck State Game Area

The 1,000-acre plus area in the City of Portage, 3 miles north of the Village. The area provides opportunities for hunting, trapping, bird watching, wildlife viewing and hiking.

Swan Park

Swan park is located in Schoolcraft township, 3 miles east of the village. The park provides walking trails, playground equipment, a picnic pavilion and picnic tables, restroom facilities, little league baseball fields, and soccer fields.

Prairie View County Park

Prairie View County Park is in Schoolcraft Township on "U" Avenue between Portage Road and Oakland Drive in Vicksburg, MI. The park offers limit horsepower boating, swimming beach with an ADA compliant beach house, pedal-boat rentals, large picnic areas, day camp activities, ballfields, soccer fields, hiking trails, cross-county skiing trails, and group activities.

Public Gold Courses

Two 18-hole public golf courses are located within the local recreation area. 1) State Gold Course located in Schoolcraft Township and 2) Old Mill Gold Course, located in Prairie Ronde Township to the west.

V. PLANNING & PUBLIC INPUT PROCESS

A. Planning Process

The Village Council and the Planning Commission includes twelve members. The Village Council meets on the first and third Monday of each month at 7:00 p.m. at the Village Hall. The Planning Commission meets the second Monday of each month at 7:00 p.m. at the Village Hall. The Planning Process for the recent effort began in 2016 for the 2017 Vision Plan. This plan set the community vision which is being incorporated in the 2018 Master Plan and the 2018 Recreation Plan. WAI also put together a citizen survey which included questions about age and recreational interest to name a few as well as collected detailed recreation inventories along with deficiencies. WAI used a systems approach to planning which incorporated the information gained from the citizen surveys and the detailed recreation inventories and deficiencies to determine the recreation needs of the Village.

B. Public Input Process

The first public input method was completed at the Planning Commission's February 12th meeting. The Commissioners and the public were given a Visual Preference survey showing images of recreation amenities and facilities identified in the Vision Plan. A written survey was also administered to gain insight from the Village of Schoolcraft residents was by conducting a public input survey. On February 12th, 2018, the survey was posted on the Village's website, shared in local Facebook groups. The survey asked respondents 11 questions. Three of the questions included household location, ages of the people living in their household, and if they have anyone in their household with special accessibility needed. The remaining 8 questions asked which recreational facilities within the Village of Schoolcraft they have visited in the past year, what activities the household enjoys, what recreational opportunities they would like to see in Schoolcraft, if they would favor a new park, if they would favor a non-motorized trail, if they would favor an improved bicycle network, what factors limit their use of Burch Park, and what additions to Burch Park would they find the most valuable. The Village received 74 responses to the public survey, most of the responses to the survey were from the Village.

The results of the survey show that Leo Burch Park is visited at least once per year by the majority of the respondents. The respondents prioritized a wish list of features that could be added or improved in the Village of Schoolcraft as follows: 1) splash pad/spray park, 2) biking/running/walking trails, 3) restroom facilities, 4) playground and structures, and 5) pavilion. The majority of respondents (74%) would favor a new park in Schoolcraft, 85% would favor a regional non-motorized trail, and 74% would favor an improved bicycle network. Respondents listed the top 2 factors that limit their use of Burch park as the "park does not have what amenities that I want to use" and "park lacks sufficient lighting". Lastly, when asked which of a list of additions to Burch Park they would find valuable, almost all respondents (90%) selected "install restroom facilities". The 2nd and 3rd most popular responses were "improved and/or additional amenities" and "install larger pavilion". A copy of the original survey and a summary of the responses and comments received have been included in Appendix [Insert Letter].

A draft Community Recreation Plan for the Village of Schoolcraft was available at the Village Hall for public review from [Insert Date] until [Insert Date]. Members of the public were invited through an announcement in The South County News to comment on the draft Community Recreation Plan. They were encouraged to submit written communication with Wightman and Associates, Inc., the Township's consultant, and/or by attending the public hearing. A copy of the notice of availability of the draft Community Recreation Plan for comment as well as the affidavit of public are included in Appendix [Insert Letter].

The second public input method used by the Village Council and Planning Commission was the public hearing. The Council advertised a public meeting notice in The South County News on [Insert Date] to

present the Community Recreation plan for the Village of Schoolcraft for public input on [Insert Date]. The plan was presented for adoption later that evening during the regularly scheduled Village Council meeting, where all Board Members approved the resolution to adopt the Community Recreation Plan. A copy of the notice of the public meeting, the affidavit of publication for the public meeting and Village Council meeting minutes, have been included in Appendices [Insert Letter], respectively. A copy of the resolution adoption the Community Recreation plan dated [Insert Date] has been included in Appendix [Insert Letter].

VI. GOALS AND OBJECTIVES

The goals and objects were developed via the public input received as well as demographic information provided in the Village of Schoolcraft 2018 Master Plan. See appendix [Insert Letter] for detailed demographic information in the Master plan.

Goal 1 – Develop an accessible trail along the North/South Rail Line through Schoolcraft to Portage in the next 3 years; Then continue the Other end of the trail from Schoolcraft to Three Rivers.

Objectives

- Develop a new non-motorized transit system for Schoolcraft in phases: Portage first, then to Three Rivers.
- Provide an alternate route to US-HWY 131.
- Offer a new recreational opportunity in the Village.

Goal 2 – Partner with the schools in the next 3 years to acquire property and pursue grants to develop a trailhead park and sports fields to support the proposed North/South Trail.

Objectives

- Provide further recreational opportunities for residents in the Village.
- Create a destination for visitors.
- Provide alternative transit for residents of Schoolcraft.

Goal 3 – In the next 2 years, assess the current amenities and the community's desired additions to make Burch Park a destination.

Objectives

- Attract young families and park-users to the Village.
- Provide for further recreational opportunities.
- Improve park accessibility for all user groups.

VII. ACTION PROGRAM

A. Action Program Summary

The Village of Schoolcraft have turned their goals and objectives into an action program for their recreational facilities. The action plan is broken down into what improvements the Village and its residents would like to make over the next five years from 2018 through 2022.

Potential projects to consider in the next 5 years:

- Burch Park Restrooms
- Burch Park Sidewalks and accessibility improvements
- Additional gathering space / pavilion at Burch Park

- Trail North (entire distance or just in Village)
- Trail South (entire distance or just in Village)

- Trailhead Park

A summary of the improvements, approximate costs associated with each improvement, and the target funding source to make these improvements happen can be seen on the following page in the Action Program Breakdown.

B. Action Program Breakdown

PROJECT	ESTIMATED COST	FUNDING SOURCES	GOALS MET
Year 1: 2018			
	\$0		
	\$0		
	\$0		
Total	\$0		
Year 2: 2019			
	\$0		
	\$0		
	\$0		
Total	\$0		
Year 3: 2020			
	\$0		
	\$0		
	\$0		
Total	\$0		
Year 4: 2021			
	\$0		
	\$0		
	\$0		
Total	\$0		
Year 5: 2022			
	\$0		
	\$0		
	\$0		
Total	\$0		
2018 - 2022 Recreation Plan Totals		\$0	

General Fund: Village of Schoolcraft
Grant: Michigan Natural Resources Trust Fund or Other Grant Agencies

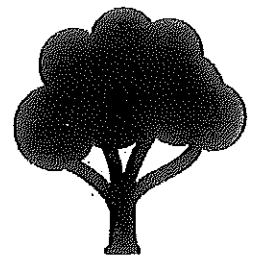
APPENDIX A

Village of Schoolcraft Parks Location Map

APPENDIX B

Survey Sample, Results & Comments

The Village of Schoolcraft would like your input to help determine park and recreation priorities for our community. This is the first step in obtaining grant money for park improvements. The survey will only take a few minutes to complete. When you are finished, please return your survey to **The Village of Schoolcraft Office, 442 N Grand St. by March 2, 2018.** We greatly appreciate your time and effort to help enhance our community.



For your convenience, this survey is also available online at: www.surveymonkey.com/r/SchoolcraftPublicInput

1. Where is your primary household located?

☐ Village of Schoolcraft

☐ Other (please specify) _____

2. Which of the following age groups does your household consist of? Please select all that apply.

☐ Under 5 years ☐ 5-9 ☐ 10-14 ☐ 15-19 ☐ 20-24 ☐ 25-34 ☐ 35-44 ☐ 45-54 ☐ 55-64 ☐ 65+

3. Which park(s) have you or any member of your household visited over the last year? Please select all that apply.

☐ Leo Burch Park

☐ Schoolcraft School Grounds

☐ None

☐ Other (please specify) _____

4. Does anyone in your household have special accessibility needs for park amenities?

☐ Yes ☐ No

Additional Comments:

5. What facilities and/or recreational activities in Schoolcraft have you or any member of your household enjoyed?

6. Which of the following recreational opportunities would you or any member of your household use if it was available in Schoolcraft? Please rank your top five (write in numbers 1-5 on your top 5 choices).

_____ Baseball Field	_____ Community Gardens	_____ Swimming Pool
_____ Basketball Court	_____ Pavilion	_____ Biking/Running/Walking Trails
_____ Soccer Field	_____ Grills	_____ Fitness Stations/Outdoor
_____ Sand Volleyball Court	_____ Picnic Tables	_____ Exercise Equipment
_____ Pickleball	_____ Benches	_____ Other: _____
_____ Tennis Court	_____ Restroom Facilities	_____ Other: _____
_____ Skate Park	_____ Bike Rental Facility	_____ Other: _____
_____ Disc Golf Course	_____ Seasonal Café	_____ Other: _____
_____ Playground & Structures	_____ Dog Park	_____ Other: _____
_____ Gaga Ball	_____ Splash Pad/Spray Park	_____ Other: _____

7. Would you favor a new park in Schoolcraft?
☐ Yes ☐ No
8. Would you favor a regional non-motorized trail in Schoolcraft?
☐ Yes ☐ No
9. Would you favor an improved bike network (a mixture of non-motorized and on-road facilities) through Schoolcraft?
☐ Yes ☐ No
10. What factors, if any, limit you or anyone in your household's use of Burch Park? Please select all that apply.
- ☐ Park lacks safe pedestrian access across streets to the park
 - ☐ Park lacks accessible pedestrian sidewalks throughout park
 - ☐ Park does not have what amenities that I want to use
 - ☐ Park is not located close enough to me
 - ☐ Park lacks sufficient lighting
 - ☐ Other (please specify) _____
11. Which of the following additions to Burch Park would you find valuable? Please select all that apply.
- ☐ Improved wayfinding and signage
 - ☐ Improved lighting
 - ☐ Improved landscaping
 - ☐ Improved pedestrian access (ex: signaled intersection / better street crossing design)
 - ☐ Install larger pavilion
 - ☐ Install restroom facilities
 - ☐ Improved and/or additional amenities
 - ☐ Other (please specify) _____

Villago of Schoolcraft Visual Preference Survey

Where is your primary household located?

Village of Schoolcraft	Other*
44	30
5916	6176

Which of the following age groups does your household consist of? Please select all that apply.

Age group	Under 5 yrs	5-9	10-14	15-19	20-24
35-44	25-34	55-64	65+	45-54	20-24
26	26	37	15	6	0
17%	17%	13%	10%	5%	0%

Which course(s) have you or any member of your household visited over the last year? Please select all that apply.

	Schoolcraft		
	School Grounds	Other ^a	None
Leo Burch Park	47	0	4
6th	34%	7%	1%
55%			

Does anyone in your household have special accessibility needs for work amenities?

	No	Yes
69		5
934		276

Which of the following recreational opportunities would you or any member of your household use if it was available in Schoharie? Please rank your top five choices (write in 1-5, 1 being your first choice)

Splash Pad / Spray Park	Hiking / Running / Walking Trails	Restroom Facilities	Playground Structures	Pavilion	Swimming Pool	Community Gardens	Basketball Court	Seasonal Café	Plastic Tables	Disc Golf Course	Bananas	Dog Park	Tennis Court	Golf	Soccer Field	Baseball Field	U-18 Rental facility	Pickleball	Other	Fitness Stations / Outdoor Exercise Equipment	Sand Volleyball Court	State Park	Cage Ball
116.00	233.00	...	125.00	76.00	51.00	43.00	41.00	41.00	39.00	34.00	34.00	34.00	26.00	22.00	19.00	15.00	12.00	11.00	11.00	11.00	8.00	7.00	2.00

Would you favor a new park in Schockcraft?

Yes	No
55	19
74%	26%

Would you favor a regional non-motorized trail in Schockcraft?

Y04	No
G3	21
B37	1576

Would you favor an improved bike network (a mixture of non-motorized and on-road facilities) through Schoolcraft?

Yes	No
55	19
74%	26%

What factors, if any, limit you or anyone in your household's use of Truch Park? Please select all that apply.

park does not have what amenities that I want to use	park lacks accessible pedestrian sidewalks throughout the park	park lacks pedestrian streets across the park	park is not located close enough to me
24	11	9	6
35%	21%	13%	9%

Which of the following additions to Dutch Park would you find *valuable*? Please select all that apply.

	Improved install restroom facilities	Improved additional seamless securities	Install larger platform	Improved lighting	Improved landscaping	Access (for signalled better access crossing design)	pedestrian improved	improved wayfinding and signage	C 10 ⁻⁶
G2	62	39	26	24	48	72	72	6	10 ⁻⁶
G3	62	40%	38%	38%	48%	72	72	6	10 ⁻⁶

* See compiled comments for more detail

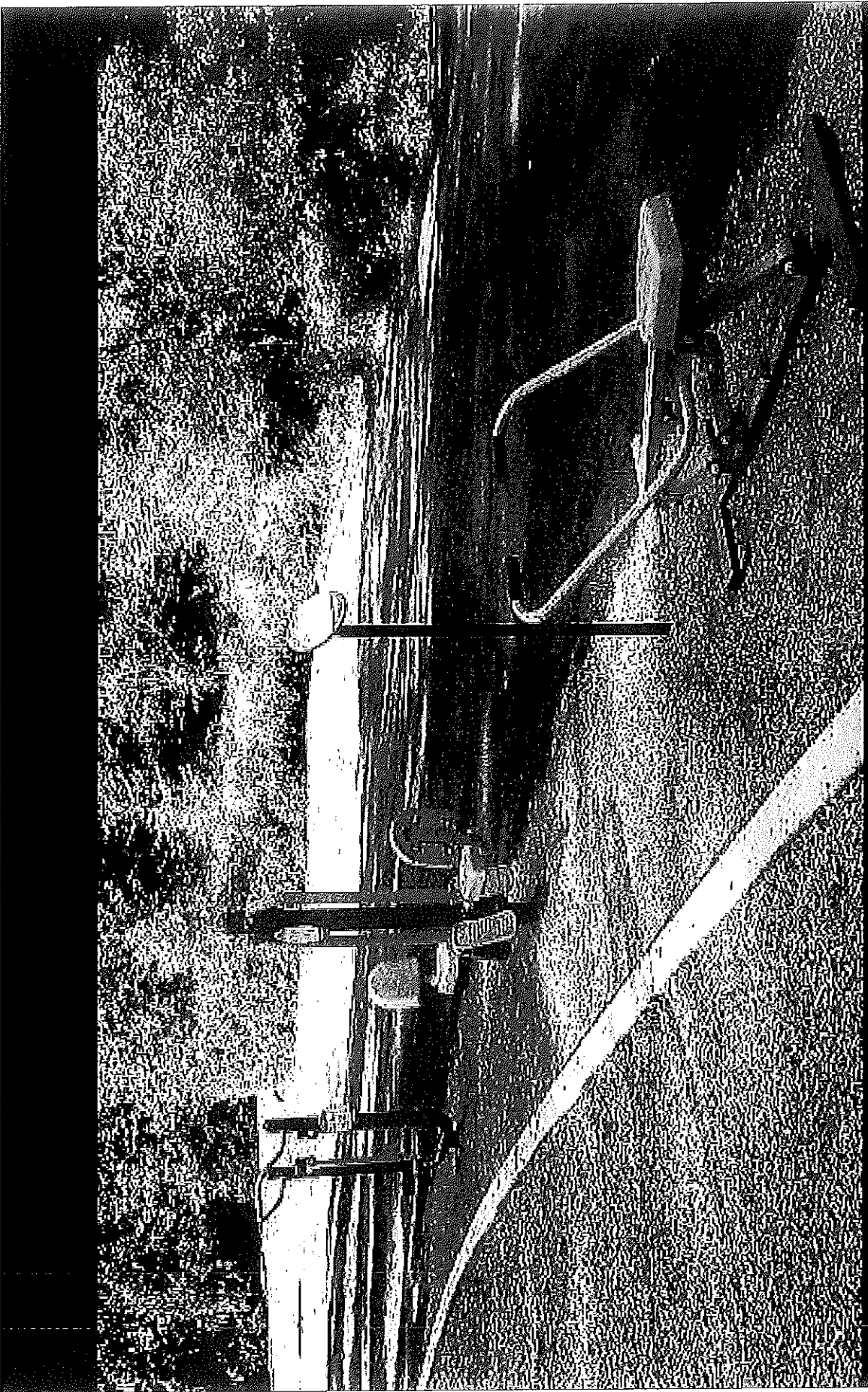
Village of Colton/Craft Visual Preference Survey

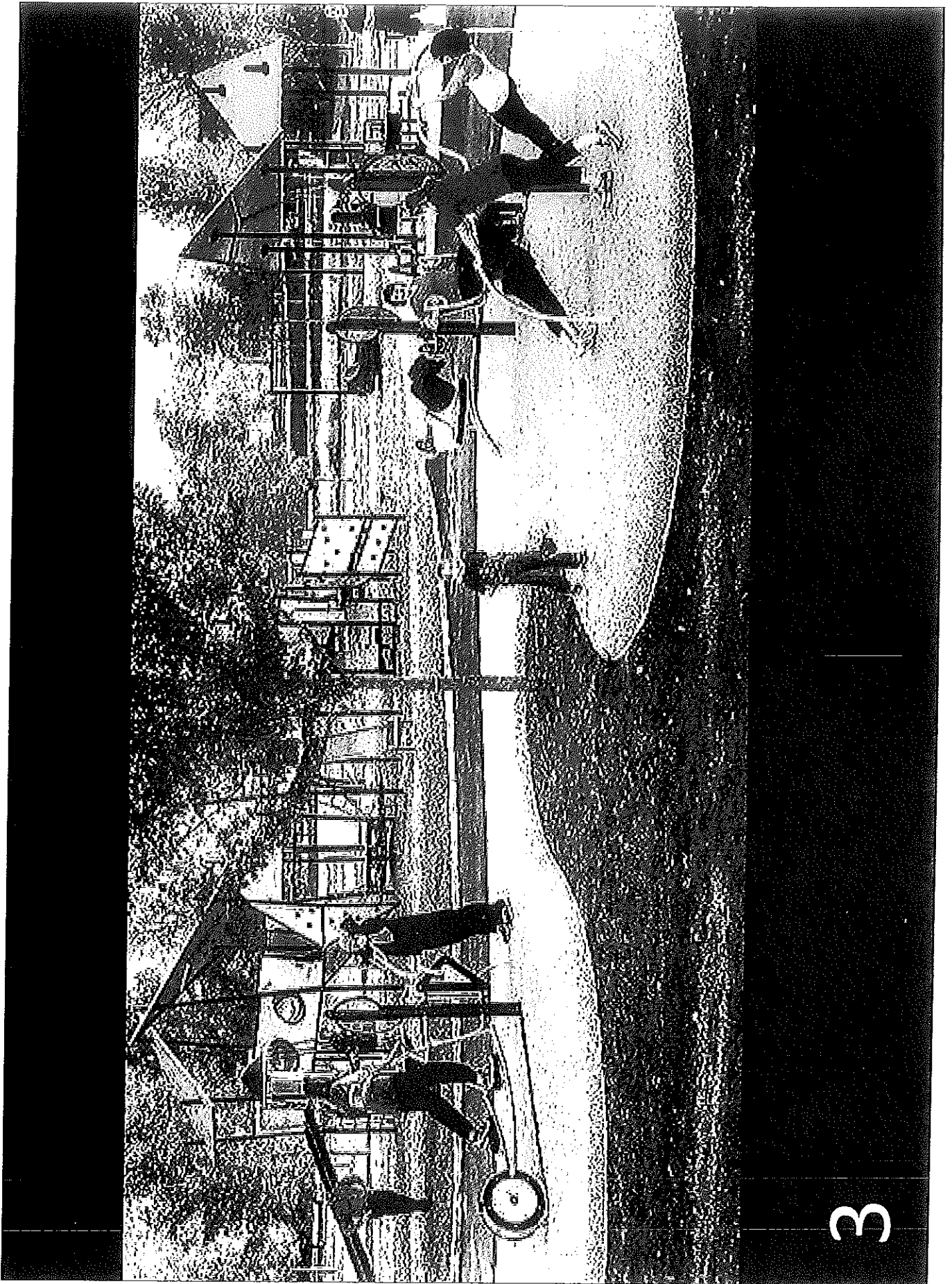
[illegible]

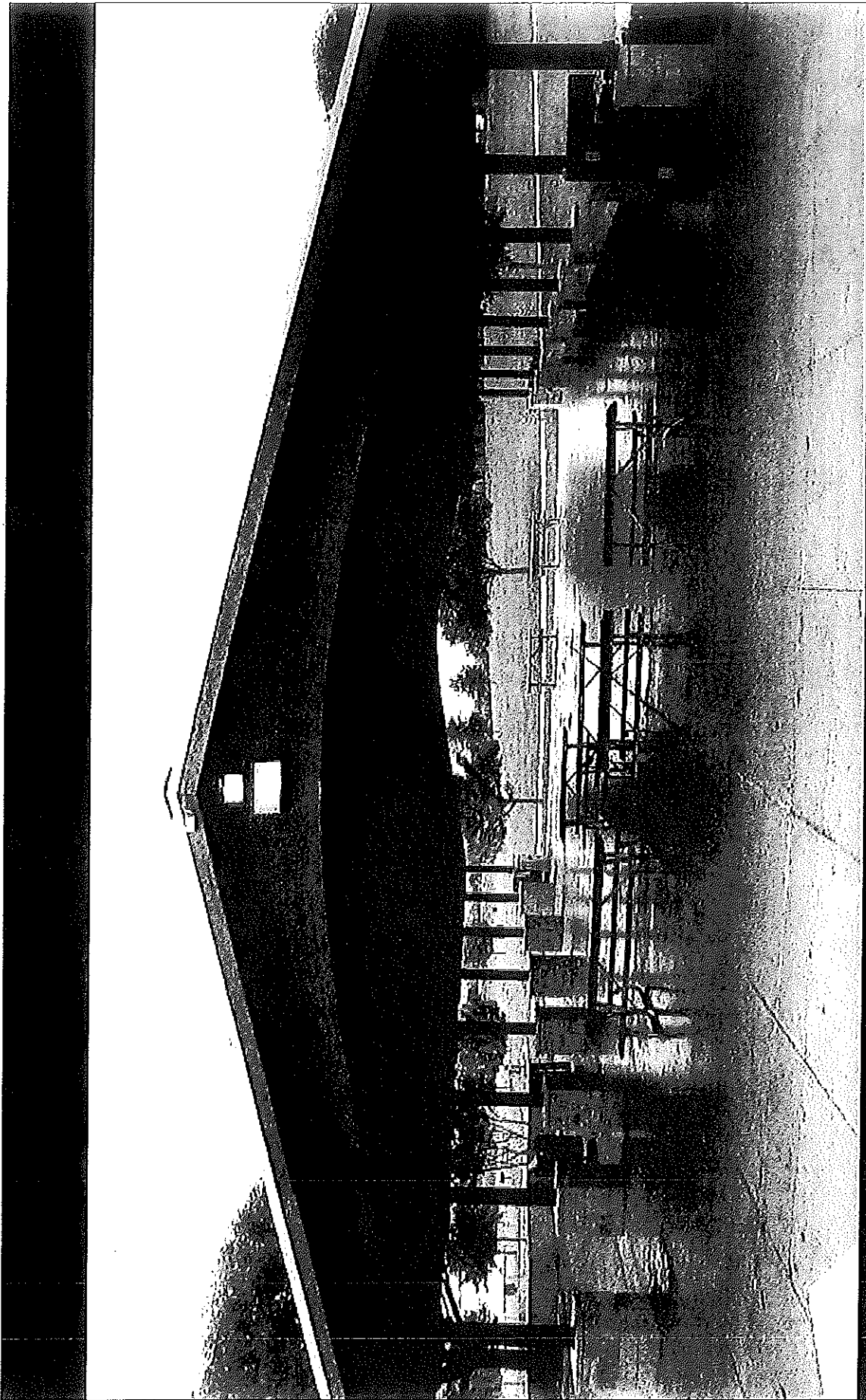
Village of Schoharie Visual Preference Survey

[illegible]

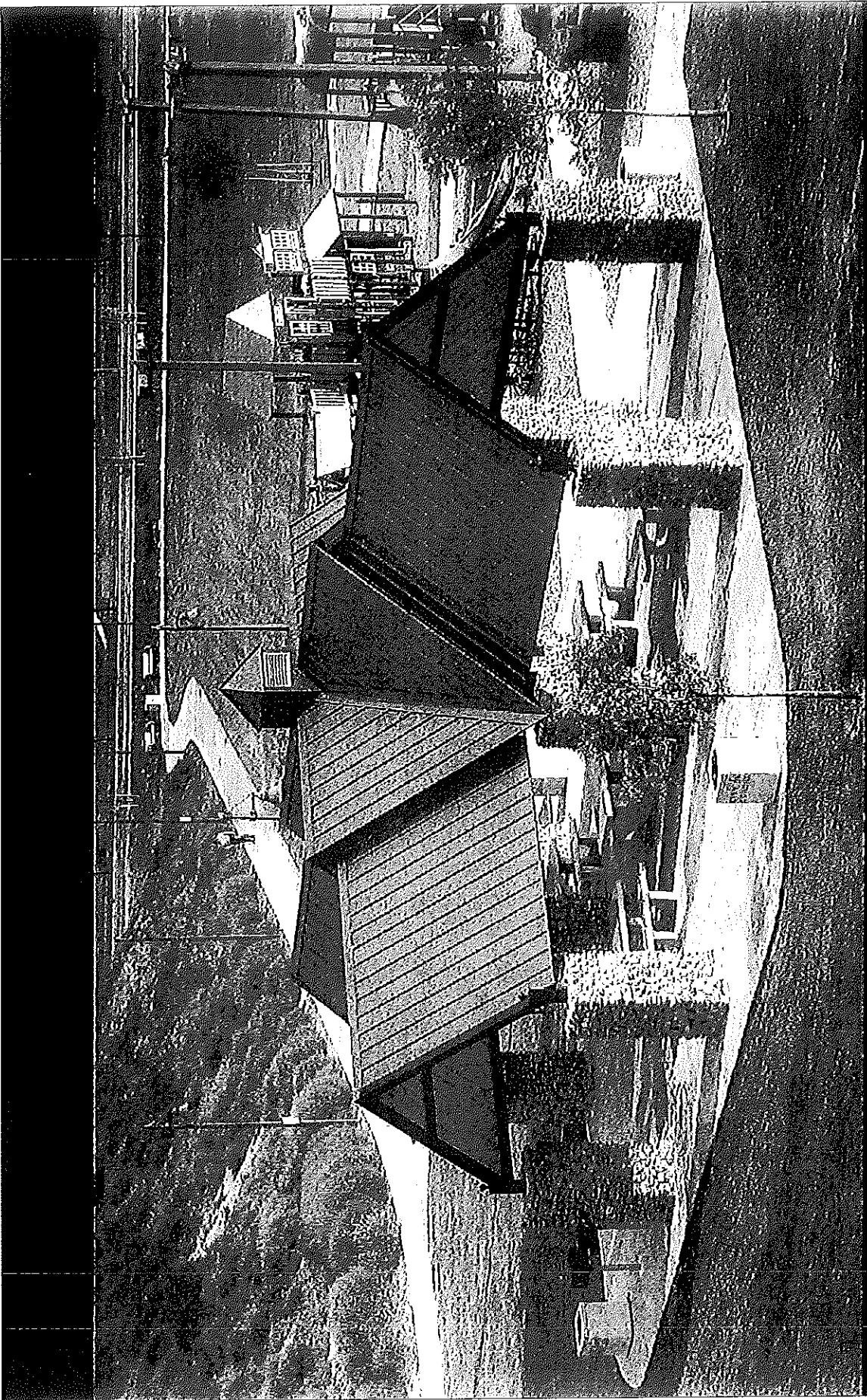






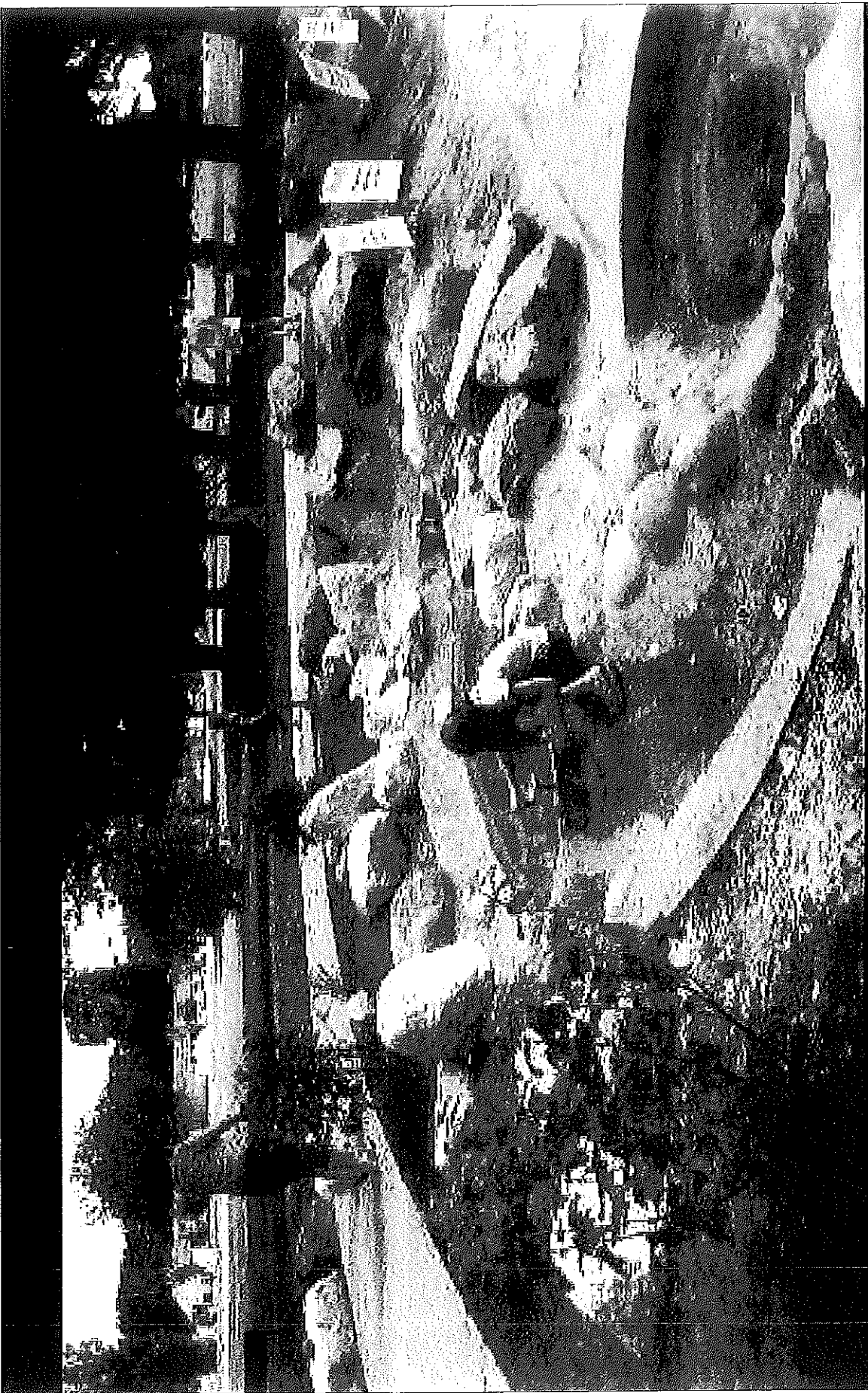










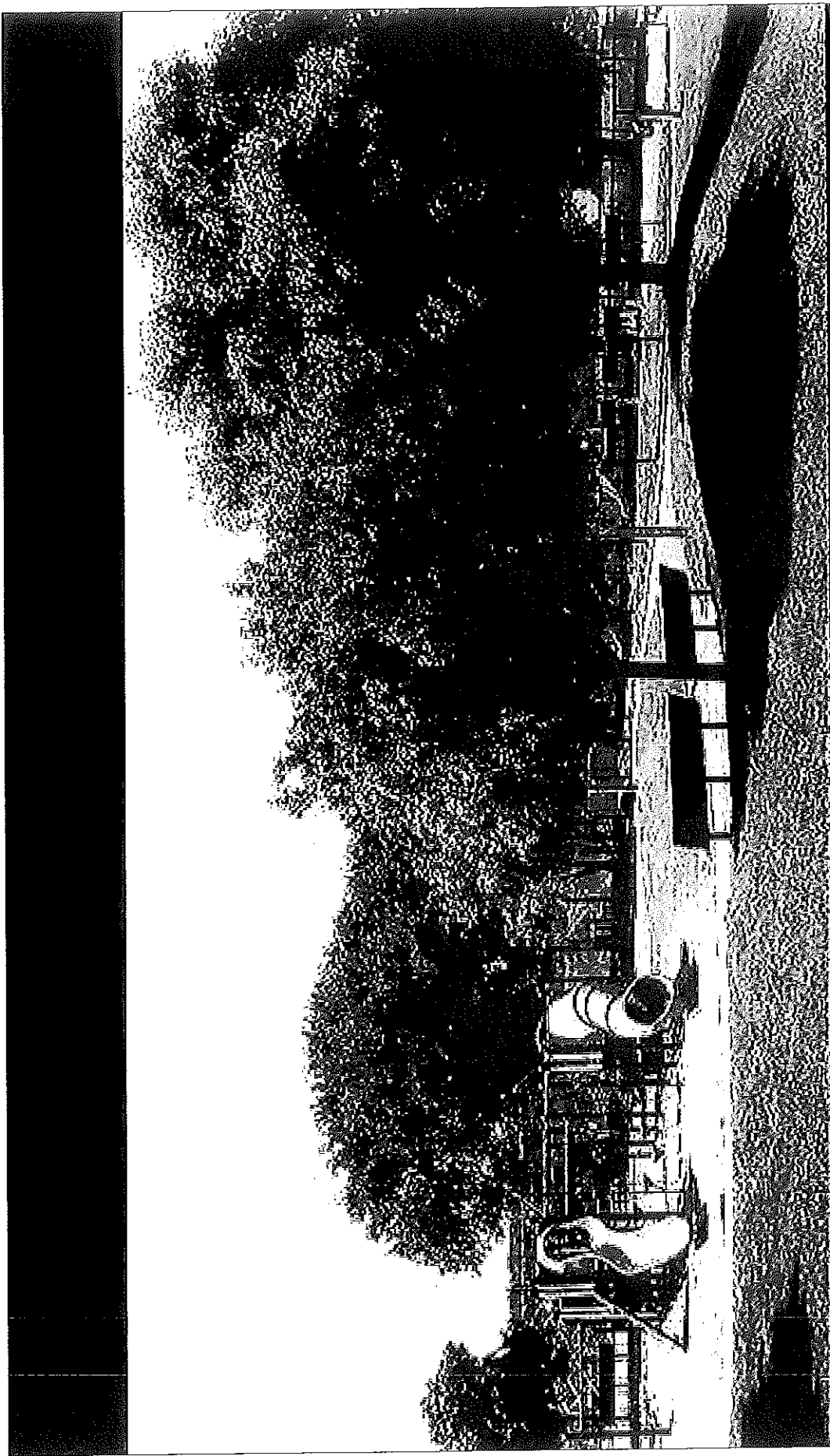






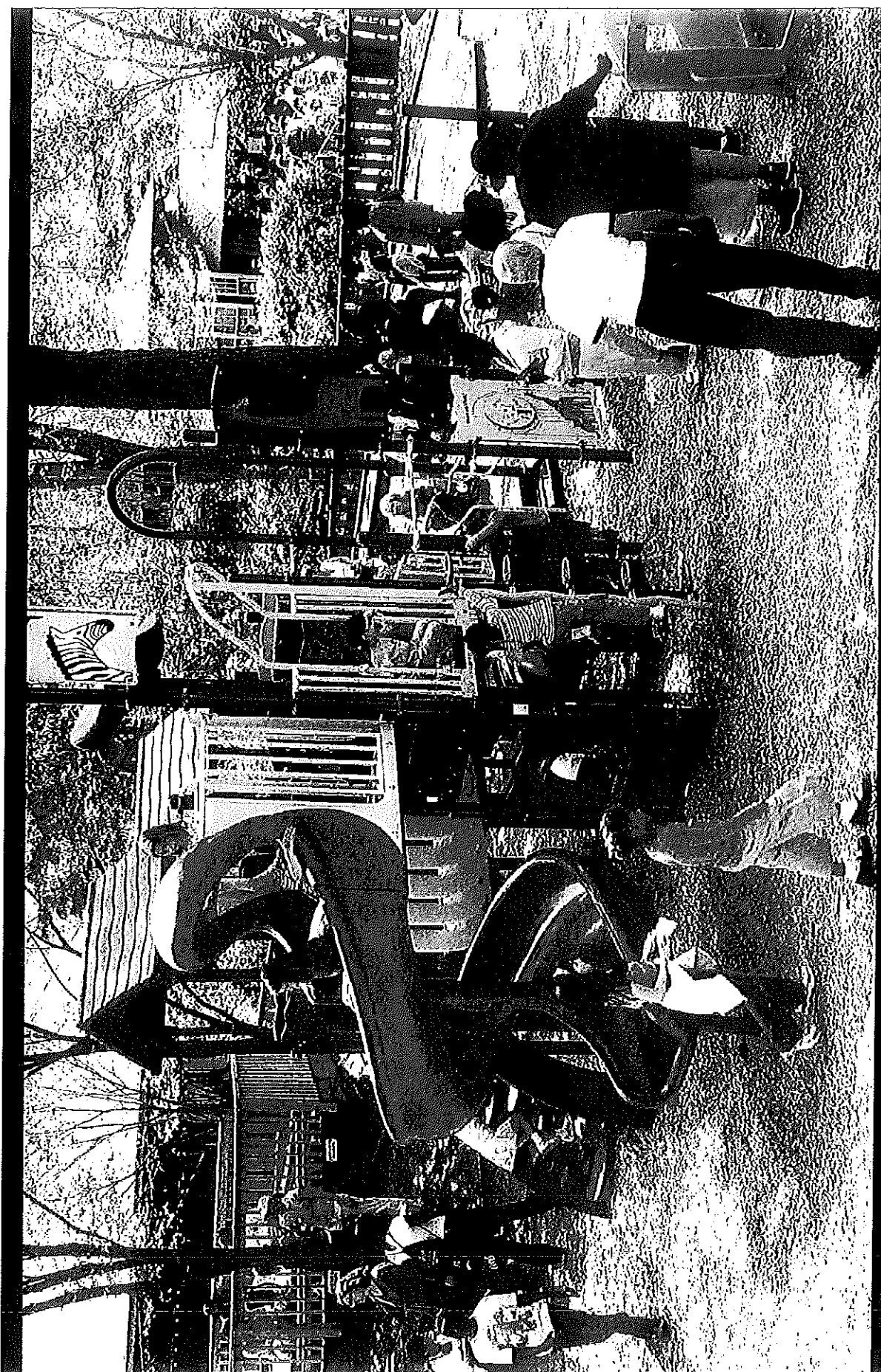


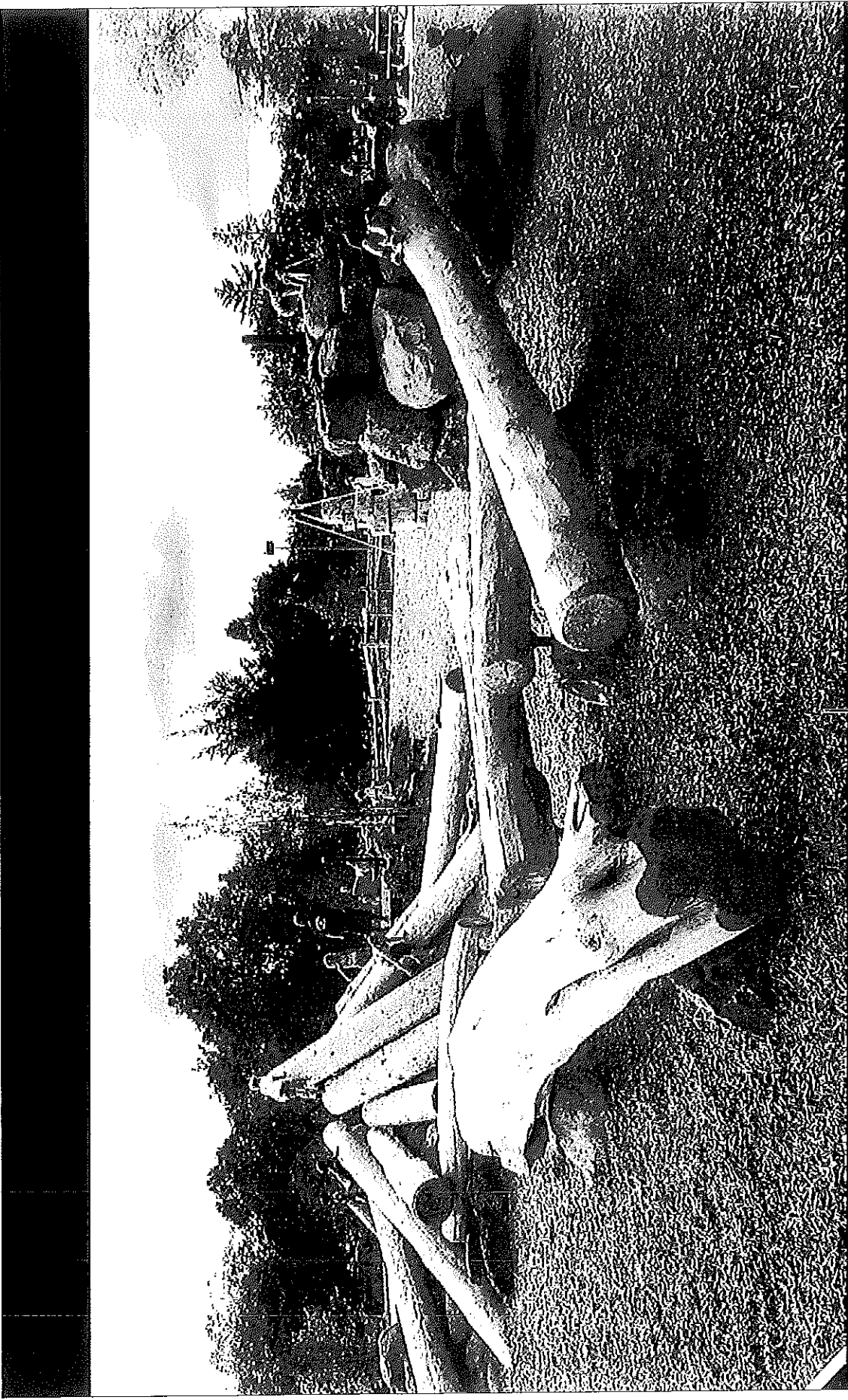


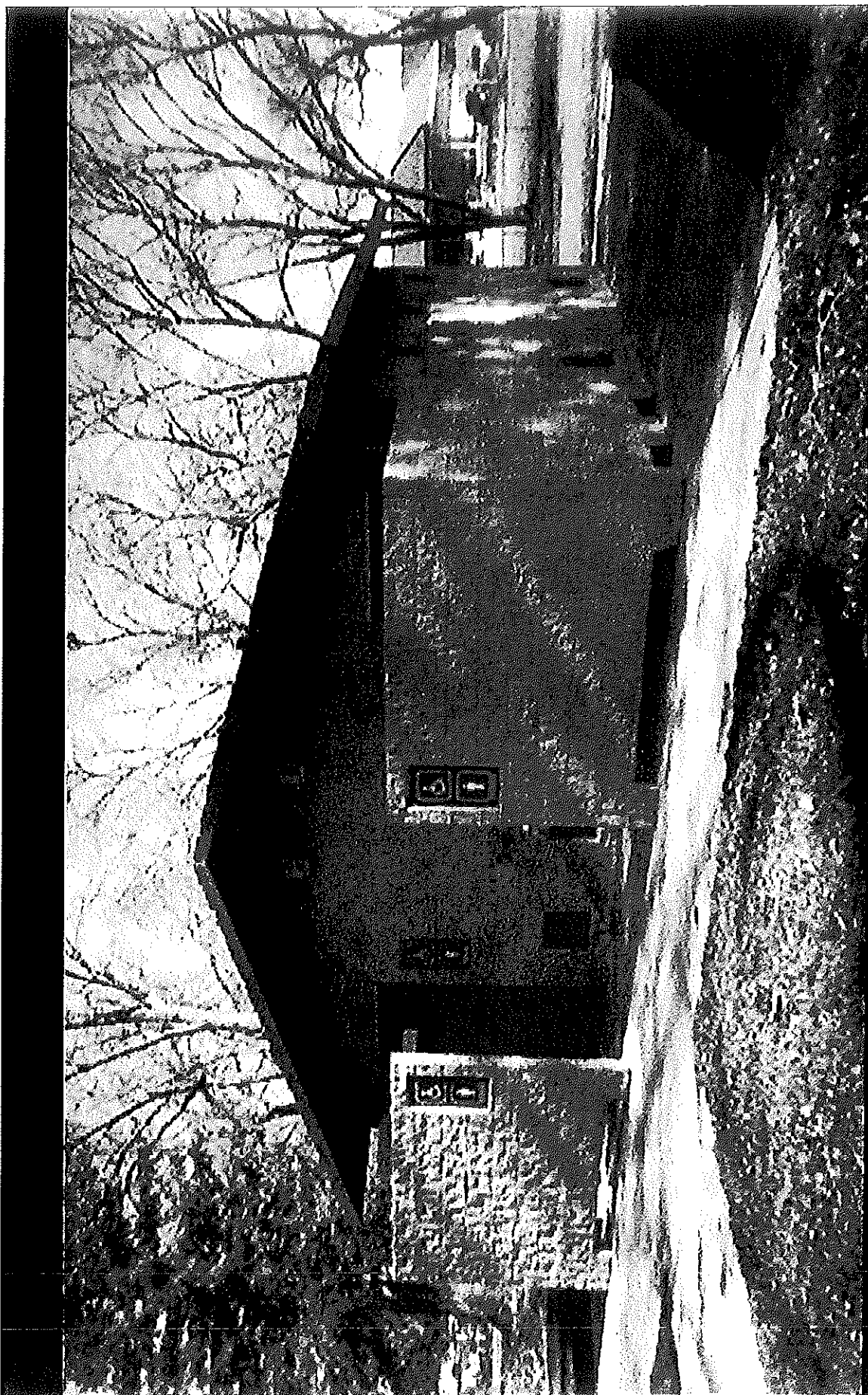








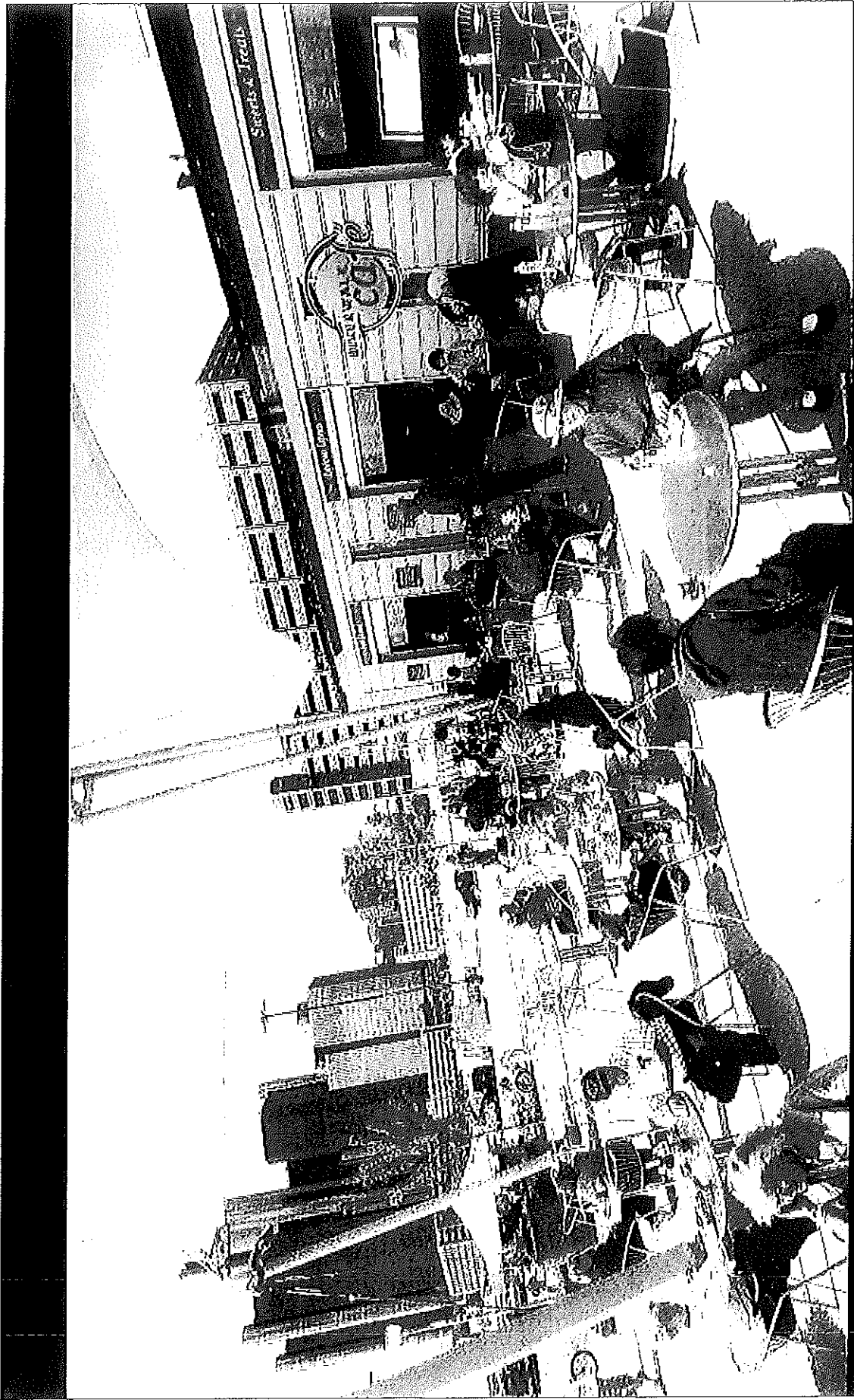






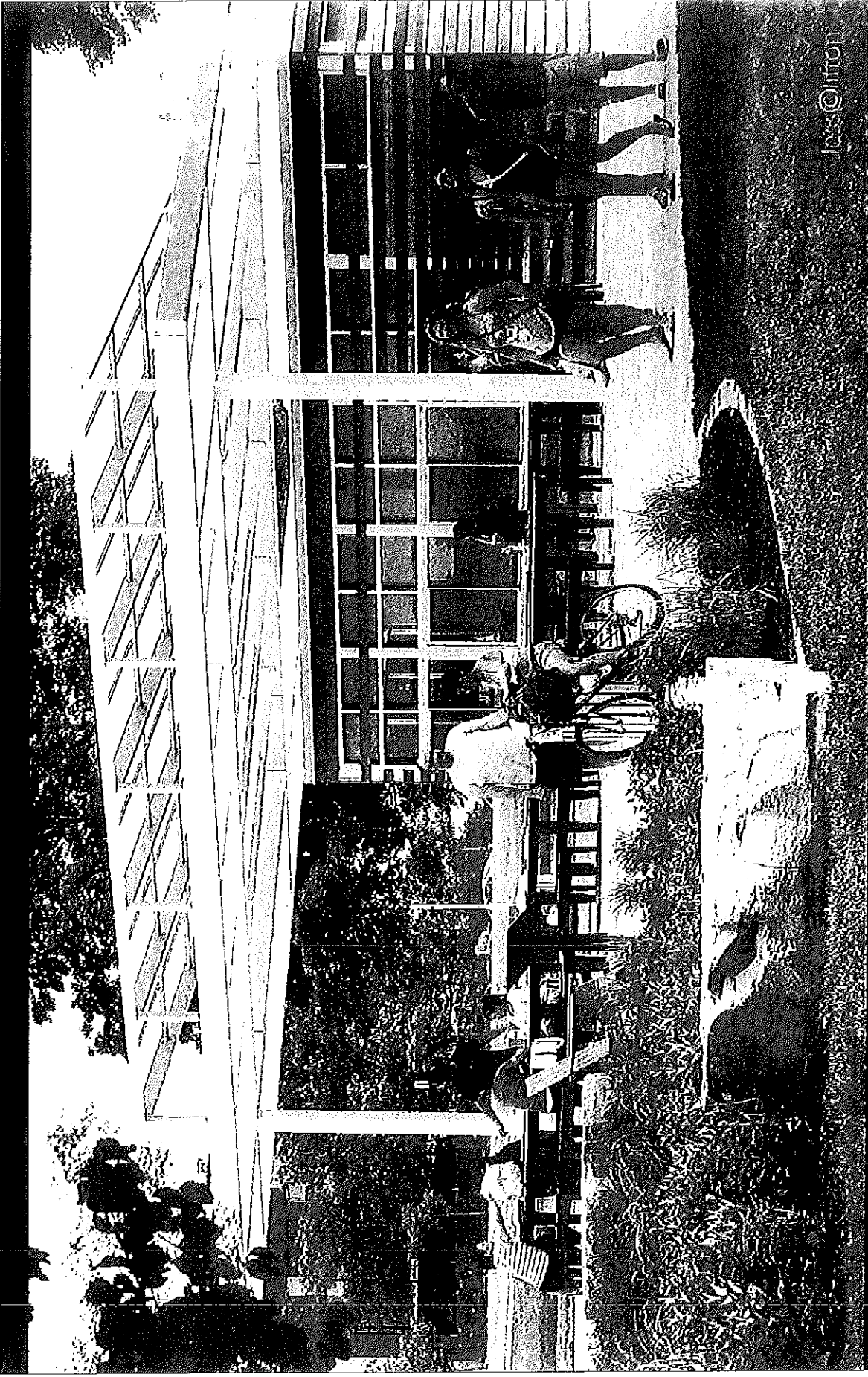




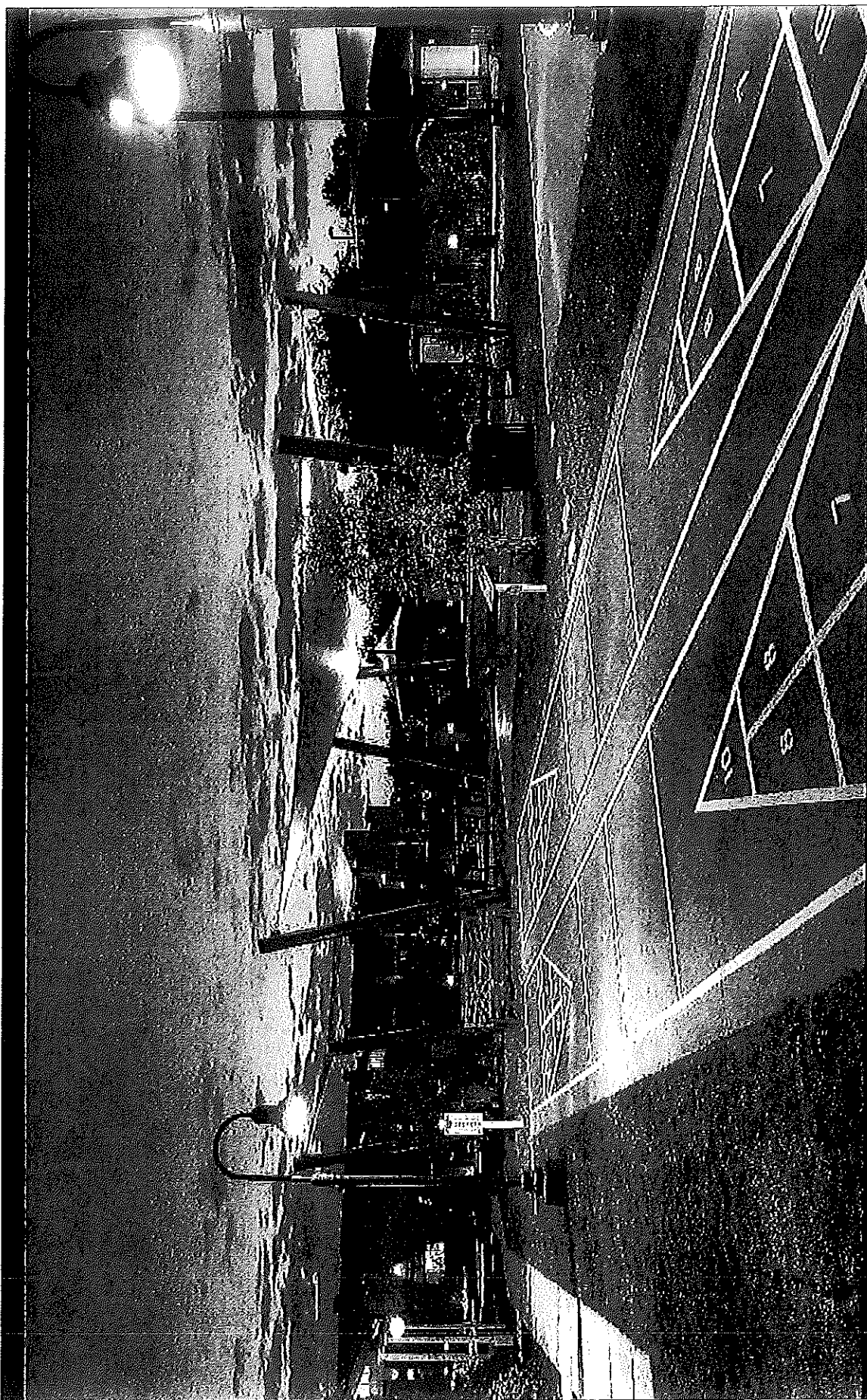








loss@linton











Village of Schoolcraft Visual Preference Survey

Please rate the image on the screen from 1 through 5 based on your personal preference for the vision of the Village of Schoolcraft, 1 being the lowest preference and 5 being the highest

	SCORE
Image 12	3.33
Image 24	3.33
Image 1	2.50
Image 2	2.50
Image 3	2.50
Image 4	2.50
Image 7	2.50
Image 13	2.50
Image 15	2.50
Image 17	2.50
Image 19	2.50
Image 20	2.50
Image 21	2.50
Image 26	2.50
Image 27	2.50
Image 28	2.50
Image 29	2.50
Image 30	2.50
Image 5	2.00
Image 6	2.00
Image 8	2.00
Image 9	2.00
Image 10	2.00
Image 11	2.00
Image 14	2.00
Image 16	2.00
Image 18	2.00
Image 22	2.00
Image 23	2.00
Image 25	2.00
Image 31	2.00

Village of Schoolcraft Visual Preference Survey

Please rate the image on the screen from 1 through 5 based on your personal preference for the vision of the Village of Schoolcraft, 1 being the lowest preference and 5 being the highest

	Comments
Image 1	Walkable trails Stretching Is this similar to walking trail? Open space OK Stations not usable in winter
Image 2	Green space Stations not usable in winter
Image 3	Playground Fun, green High energy Mixed use - green space Kids park Too modern Family
Image 4	Community Gathering Outside use Unattractive Nice - but too big needed Already in Vicksburg Picnic opp, security at night?
Image 5	Community Gathering Rustic Homey - natural Like looks Appropriate size Too small Small better given land limit
Image 6	Too much Modern Too modern But better layout Mixed use Too elaborate Destination Too modern looking

Village of Schoolcraft Visual Preference Survey

Please rate the image on the screen from 1 through 5 based on your personal preference for the vision of the Village of Schoolcraft, 1 being the lowest preference and 5 being the highest

	Comments
Image 7	Too much Peaceful Interesting but unattractive Bleak looking? Too modern Like green roof and size
Image 8	OK Industrial Unattractive - institutional Sterile Too modern Spaceship look
Image 9	Too much liability Peaceful Natural Like the water Yum! Water, grass, rocks, kids Potential pool flows Fun but liability? Tripping?
Image 10	Too much liability Fun Too big Neat, but too much Too much! Flat land Fun Desert feel
Image 11	Too much liability Good layout Just OK Weird Kid's Liability and seasonal limit
Image 12	Too much liability Shade Natural environment Fun OK Family friendly

Village of Schoolcraft Visual Preference Survey

Please rate the image on the screen from 1 through 5 based on your personal preference for the vision of the Village of Schoolcraft, 1 being the lowest preference and 5 being the highest

	Comments
Image 13	Wet Cool Fun! Fun! Liability Popular, water cost and maintenance
Image 14	Layout Just OK Kid's Relaxing and fun
Image 15	Not pleasing More in keeping Like Burch Park
Image 16	Too much liability Natural Environment Water Not practical Schoolcraft is flat
Image 17	Too much liability Crowded Busy and fun Too dense Good Crowded Crowded, plastic hot
Image 18	Too much liability Rustic Lonely and ugly Like - but not realistic Too stark Liability Like log look
Image 19	Too much liability Functional Looks like everybody else's Blah! Needed Needed Functional and easy to find

Village of Schoolcraft Visual Preference Survey

Please rate the image on the screen from 1 through 5 based on your personal preference for the vision of the Village of Schoolcraft, 1 being the lowest preference and 5 being the highest

	Comments
Image 20	Industrial Need restroom Warmer looking Needed Too small
Image 21	Rustic Don't like eating area Except for picnic table Rustic but why a table?
Image 22	Design Rustic OK No Simple and easy
Image 23	No Too "big city" No Nice Not attractive Too downtown
Image 24	No Color Fun activity No If we get a gail Too touristy
Image 25	OK Rental Too structured Cool Bike rack yes, not rental
Image 26	Green space Too modern for a historical community Too modern! Not attractive Campus look and feel
Image 27	Shuffleboard Could be nice for older folks I like, but kids don't play Nice! Senior's Shuffleboard not here in winter?

Village of Schoolcraft Visual Preference Survey

Please rate the image on the screen from 1 through 5 based on your personal preference for the vision of the Village of Schoolcraft, 1 being the lowest preference and 5 being the highest

	Comments
Image 28	Coffee Both have to be in right place Cozy Good Little shops with outdoor / indoor
Image 29	Tight Both have to be in right place Too hip! Good Fun Like zoo or amusement park
Image 30	Fun No Won't last long Very seasonal limit
Image 31	Cool Yikes! Fun but not useable

APPENDIX C

Notice of Availability for Public Comment, Notice for Public Meeting & Affidavits of Publication

APPENDIX D

Meeting Minutes from Public Meeting

APPENDIX E

Official Resolution of Adoption

APPENDIX F

Copies of Letters Transmitting Adopted Plan to County and Regional Planning Agencies

APPENDIX G

Village of Schoolcraft, MI 2018 Master Plan