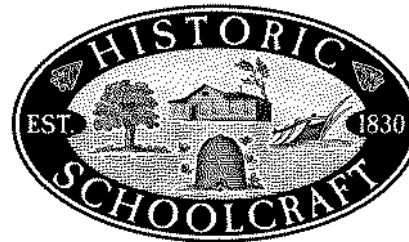


# The Village of Schoolcraft

Spring 2010 Edition



## INSIDE THIS ISSUE.....

A Message from the President  
Village Manager's Corner  
Police Department News  
Community News  
News You Can Use from the DPW

## Village Official and Staff Directory

269-679-4304 Administrative Office  
269-679-5600 Police Department  
269-679-5658 DPW  
1-800-627-2801 Bruce Dean  
Associated Government Services

President:	Daniel P. DeVries
Trustees:	Scot Dailey Russel Barnes Todd Carlin Dorothy J. Clark Keith Gunnett Carl Tackett
Manager:	Cheri Lutz
Clerk/Treasurer:	Faith Akert
Office Assistant:	Theresa O'Leary
Police Chief:	Bryan Campbell
Sergeant:	Jamie Edwards
Officers:	Matt Britton Jim Day Mark Stoneburner Larry Weers
Auxiliary Officers:	Mary Secondi Larry Schwabauer
DPW Super:	Gordon Shaw
Asst. Super:	Rob Coffman

## 2010 QUARTERLY MEETING CALENDAR

### Village Council

7:00 p.m. Village Hall. April 5, 19,  
May 3, 17, June 7, 21, 2010.

### Planning Commission

7:00 p.m. Village Hall  
April 12, May 10, June 14, 2010.

### Downtown Development Authority

April 1, 2010.

## A Message from the Village President



If you are like me, you are happy the snow is gone and ready to take on the joys of spring. The new playground equipment is getting great use in the park, and people are out and about enjoying the warm weather while walking our fine sidewalks.

Over the winter, the Village entered into an agreement with the Schoolcraft Library to exchange properties and support a library expansion. The library will be taking the site currently occupied by the tennis courts and the Village will receive the empty lot on Hayward Street. This exchange will make the park/library area an even more enjoyable location for years to come.

I called a Joint Meeting of the Village Council, Planning Commission, and DDA (Downtown Development Authority), which was held on March 25th. It was a very productive meeting focused on strategic development and planning. The Village is currently in a position to have a balanced budget with all existing services for fiscal year 2010/2011. We anticipate tough times ahead and feel it is important to understand the direction of the Village, and how we will overcome challenges in accomplishing our goals. I am very interested in community input as we develop a Mission Statement for the Village of Schoolcraft. We need to clearly understand who we are and who we want to be, and then place expectations on our elected and appointed officials to help us get there. If you have thoughts on this matter, please take time to contact the Village or myself to share your opinions. A Public Hearing on this will take place at some point this year. I want to thank all who participated in the meeting.

Thank you for the opportunity to serve you as your Village President. I welcome any and all feedback. Remember to look at our website for village information (<http://villageofschoolcraft.com>). Go Eagles!

Dan DeVries  
Village President

## *From the Desk of the Village Manager.....*

The long days of winter are nearly over, and with spring around the corner, we are all busy planning projects, cleaning garages, and doing outdoor work.

The Village of Schoolcraft is also preparing for spring and working hard to spruce up our town to make sure it is clean and beautiful for our businesses, residents and visitors. We want everyone to know that we take pride in our community and the services that we provide.

One big change this spring, is that Gordon Shaw will be leaving us after 28 years of service to the Village. I am pleased to tell you that Rob Coffman will be promoted to the DPW Superintendent position effective May 1st. We are all looking forward to working with Rob in his new capacity, and we know that he will serve the community well.

The Village Council recently agreed to a "land swap" with the Schoolcraft Community Library. The Library is now the proud owner of the tennis court property located just south of Burch Park. The Village Council is very pleased to assist the library in the expansion of their facility.

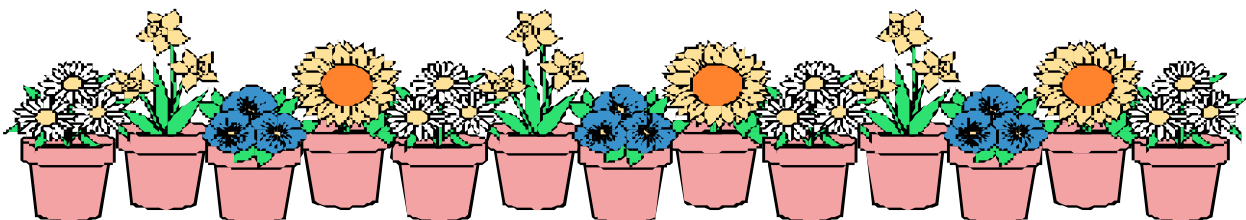
Speaking of the park, the new playground equipment was installed late last fall, and there was not much time for play activity. I am looking forward to seeing many smiling faces of children playing on the new equipment this spring. Remember too that Burch Park is a great place to have a family picnic. It is equipped with picnic tables and grills, so while your kids are busy playing, take advantage of the other amenities the park has to offer.

The Planning Commission has been busy reviewing and updating a number of zoning ordinances, with a Public Hearing to be held in early spring. I would like to welcome our new Commissioners, Bret Willis, Josh Graber and Wes Schmitt.

Village Wide Garage Sale Days will be held on April 16th and 17th with Village Wide Clean Up on April 24th. Please remember that the Village does advertise once for this event in the Commercial Express.

On behalf of the Village Staff, Happy Spring!

*Cheri M. Lutz*  
*Village Manager*





# Schoolcraft Police Department



With warm weather approaching, here are a few ordinance reminders that we often receive complaints about:

**Allowing a Dog to Run at Large:** Any person who owns or keeps a dog within the limits of the Village must keep the dog under immediate control, leash or chain when it is not on the owners property.

**Barking Dogs:** The keeping of any animal which causes frequent or long-continued noise that shall disturb the comfort or repose of any persons in the vicinity is prohibited.

**Junk Vehicles:** Any vehicle which is not licensed and insured for operation on the highway or is inoperable is in violation. The fact that a vehicle is for sale does not matter. The vehicle in question cannot be on a person's property for more than 10 days at any time within a calendar year. A vehicle which meets the criteria of being a junk vehicle may be kept on the property if it is placed in an enclosed structure (garage).

**Blight:** Building materials, junk, trash, rubbish or refuse of any kind may not be kept outside for a period to exceed 30 days. Furniture typically found inside a residence may not be kept outside.

**Lawn, Noxious Weeds:** Weeds or grass may not exceed 12 inches. When a violation occurs, the property owner will be given 48 hours to take care of the violation.

**Right of Way:** With the exception of decorative flowers, a resident may not place any structure, sign or other object within the right of way (33' from the center of the roadway). Basketball hoops can be placed off the roadway on the right of way in a cul-de-sac from March through October.

**Parking.** A person may not park their vehicle on the paved portion of the roadway within the village limits unless a curb is present. A person may not park on the right of way between 2-6 am unless the person is the property owner or a visitor of the home.

**Curfew.** A person 16 years or younger may not be out between the hours of 10 pm and 6am. There are some exceptions. The curfew ordinance is meant to curb juveniles from being out in the public in the village during the before mentioned hours.

**Golf Carts.** This is not a local ordinance but is a State Law. A golf cart may not be operated on a public highway in this state unless it is registered, insured, and has all required equipment of a motor vehicle.

*Chief Bryan Campbell*

bcampbell@villageofschoolcraft.com

# Village Wide Garage Sales and Spring Up Days Coming Soon.....



**Garage Sale Days**

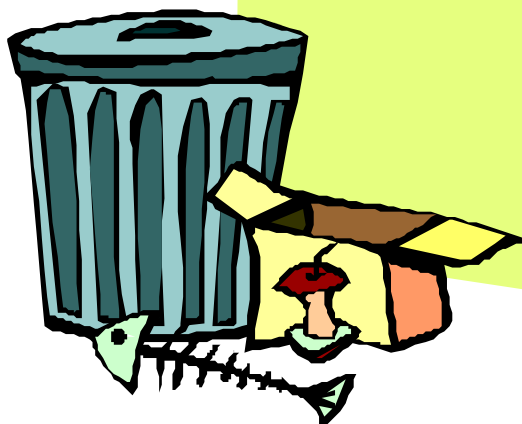
**April 16 from 9 to 6**

**April 17 from 9-4**

**Spring Clean Up**

**April 24th at 7:00 a.m.**

**For additional information  
contact Theresa O'Leary at  
679-4304.**



## E-MAIL NEWSLETTER NOW AVAILABLE

Would you like to receive your newsletter via e-mail? If so, please give us a call or e-mail us at [cmlutz@villageofschoolcraft.com](mailto:cmlutz@villageofschoolcraft.com). and we will gladly add you to our distribution list. Newsletters are mailed quarterly during the months of January, April, July and October.

### **Q**uick Notes

**D**ue to budget constraints at the State of Michigan, the Mobile Secretary of State will not be offering their services this year.

**T**he Village's Department of Public Works will pick up leaves this spring. Please put your leaves in paper bags and call the office to have them picked up.

**B**rush pick-up is done on the last Monday of each month beginning in the month of March. Brush may be taken to the right of way the Wednesday before the pick up day.

**H**ydrant Flushing will take place on, April 27th. Please be sure to run your water for a few minutes before doing laundry on that day.

**T**he Village Office will be closed on Monday, May 31, 2010 for Memorial Day.

### Water Bills

From time to time, we hear comments from our water customers stating that they did not receive a water bill

Water bills are mailed on or near the following dates:

March 1

June 1

September 1

December 1

If you do not receive a water bill near the scheduled mailing date call the Village Office to have another bill sent to you.

Payment is always due on the 15th of the month unless the 15th falls on a weekend, then it is due the following Monday.

Payments may be made after hours using our drop box located next to the main entrance doors.



### Easter Egg Hunt

**T**he Annual Easter Egg Hunt sponsored by the Lions Club will be held on Saturday, April 3, 2010, at 11:00 a.m. At Burch Park.



## *Goodbye, Good Luck, and Farewell My Friend*

On April 30<sup>th</sup>, 2010, Gordon Shaw, DPW Superintendent of Public Works will be retiring after 28 years of service to the community.

Gordon started working in the Village in 1982 where he quickly learned to take care of the needs of the Village. Gordon and his wife Jackie were married for 31 years and raised two fine young men who went to Schoolcraft Community Schools. During those years, Gordon spent much of his free time coaching and participating in a variety of sporting activities.

In his time here, Gordon has had the pleasure of working under a number of councils and managers, and has appreciated their flexibility in allowing him to participate in his son's school events.

Gordon has seen many changes in his 28 years including the expansion of the water system, infrastructure improvements, sidewalk improvement and expansion, and a number of other projects. One project of particular pride is the Streetscape Project, where Gordon spends considerable time attending to flower planting and watering and keeping the area in tip-top shape.

Gordon has enjoyed meeting business owners and people in the community, and the long term relationships they have developed over the years. Another working relationship that he has particularly enjoyed, is the one that he has had with Rob Coffman. Together, they have worked hard, laughed hard, and have both played a big part in keeping our community clean and beautiful.

Unlike most people, Gordon loves **SNOW** and has always looked forward to snowplowing. He has taken great pride in keeping the streets clear of snow, and the Village has appreciated his enthusiasm. His biggest regret is that he never had the opportunity to plow during the crippling snowstorms that we had in the mid 70's.

Gordon has many plans for the future. One of them is to realize his dream to buy a Harley and see where the road takes him. He also plans to spend time at his lake cottage, and to spend his winter months in Florida with his son and daughter-in law.

Those of us who have had the pleasure of working with Gordon will miss his great presence and smile. Truly, it has been a pleasure to work with him. That being said, we know that Gordon has made many plans for his retirement years, and we wish him the best of luck, good health and happiness.



## SCHOOLCRAFT COMMUNITY LIBRARY NEWS

**ADULT BOOK DISCUSSION GROUP AT THE LIBRARY**---The Schoolcraft Community Library's April book pick for the Adult Book Discussion Group is *Water for Elephants* by Sara Gruen. The group is growing and there have been some lively discussions so far, so come join the fun. Copies of the book and a book study guide are available at the Schoolcraft Community Library, so call ahead and reserve a copy. There are two times offered for the book discussion group, so if you can't make one, perhaps you can make the other. They are 2 p.m. and 7 p.m. Hope to see you there. Call the library if you have any questions. 679-5959.

**GARDENING/LANDSCAPING WITH NATIVE MICHIGAN PLANTS**---The Schoolcraft Community Library will be hosting Tom Small from Kalamazoo Area Wild Ones on Tuesday, April 13 in an hour long workshop on Landscaping with native Michigan plants. Tom and his wife Nancy are retired professors from WMU and after being inspired by Sara Stein and local grower Steve Keto, began landscaping their yard with Michigan native plants in 1996. The results were so exciting and rewarding that they founded the local chapter of Wild Ones, Natural Landscapes in 1999. Tom's presentation includes information on native trees and shrubs, as well as wildflowers and grasses. He illustrates their landscaping mistakes as well as their successes, and provides plenty of practical information about growing native plants. What a great way for you gardeners to start your spring gardening and landscaping. So, come join us and learn how to make your yard more beautiful. Call the library at 679-5959 with any questions and to register for this wonderful evening.

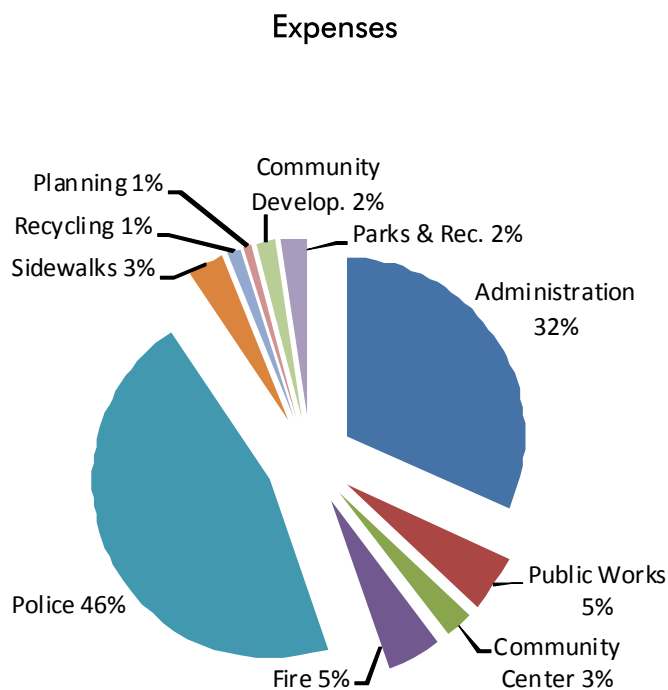
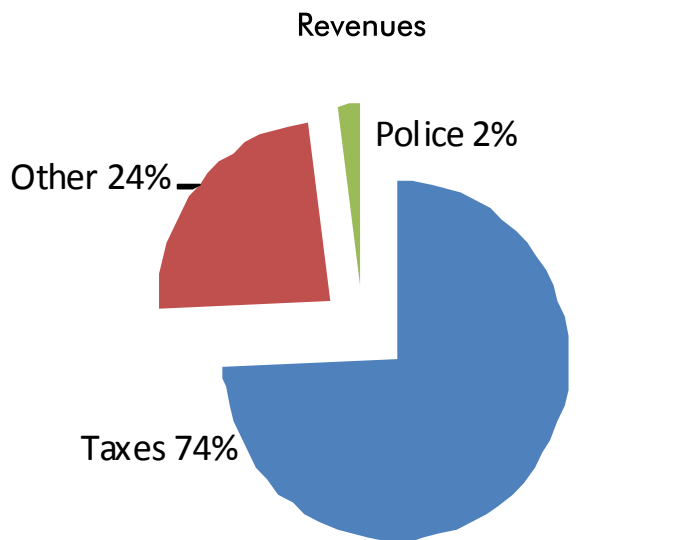
**FRIENDS OF THE LIBRARY ANNUAL BOOK SALE AND BAKE SALE**---The Schoolcraft Friends of the Library will be hosting their annual book sale at the Schoolcraft Community Library on Friday, April 16 from 8 a.m. to 5 p.m. and Saturday, 9 a.m. to 3 p.m. There will be adult and children's books, audios, and videos. We are clearing out our video collection, so there will be some great choices. This is a fundraiser for the Schoolcraft Community Library summer reading program, so come support your local library. There will also be baked goods for sale. NOTE: the library is accepting book donations and they can be dropped off at the library during their open hours: Mon.: 10-7:30, Tues. & Wed.: 1:00 to 7:30 p.m., Thurs.: 10-5, Fri.: 1-5 p.m. and Sat.: 10-3. Call the library at 679-5959 if you have any questions.

**THE TRUTH AND MYTHS ABOUT HOSPICE**---SouthernCare Hospice will host an information meeting on Thursday, April 22 from 2 to 3 p.m. at the Schoolcraft Community Library. Julie Goodwin, Volunteer Coordinator for SouthernCare Hospice of Kalamazoo will share information about the services they provide and how they can possibly be of help to you and your loved ones in the future. Hospice is not reserved for the last two weeks of life as so many believe and it is not a service only for cancer patients. "I have found that there are many misnomers about hospice and general fears about our service and educating the public has become a passion of mine." She looks forward to meeting you and helping you learn more about this important program. Call the library with any questions at 679-5959.



## Village of Schoolcraft General Fund Budget 2010-11

March 1, 2010, began the new fiscal year for the Village of Schoolcraft. Tax revenues from the Summer Village Tax to be collected July 1, 2010, constitutes 74% of the Village Budget.



Note: The Village tax rate is 14.9005 Mills or 32.3% of the approximate 46.1976 Mills levied on residential property.

## Fascinating Facts About Water



**E**very time you turn on the tap in your home, you receive one of the world's most precious commodities - fresh, clean drinking water. Essential for all life, water is an amazing substance that can appear as a liquid, a solid, or a gas.

**C**lose to three-quarters of the Earth's surface is covered with water, but less than 1 percent is suitable and available for drinking using conventional water treatment.

**O**f all the water in the world, 97 percent is in the oceans and about 1.7 percent is locked up in ice and snow. Icecaps and glaciers hold the majority of the Earth's freshwater - about 68.7 percent.

**I**ce cubes float because ice is less dense than water. Water freezes in a lattice-like formation, which creates buoyancy and allows water to float.

**W**ater is the original health drink. It contains no fat, no calories and no cholesterol.

**B**ecause 60 percent of an adult's body is water, it is essential to replenish the water you lose through breathing, perspiration, and excretion. For most people. This equates to approximately 8 cups (2 liters) a day.

**B**e careful of what you pour down your drain. It is the gateway to your wastewater disposal system and eventually to our water supply.

**A** snow crystal contains approximately 1 quintillion (1,000,000,000,000,000,000) molecules of water.



## Schoolcraft Schools



**During these very challenging economic times, Eagle pride continues on -**

The girls Varsity basketball team had a great 19-4 season record and won the districts. The team finished second in the K.V.A. and had three players on the all-K.V.A. team: Carly Scott, Amanda Kotecki and Alicia Dorko. The boys team has a sterling 19-2 record. They are outright K.V.A. champions. All-K.V.A. performers include Derek Lennon, Kody Chandler and Tyler Dow. Coaches Doug Flynn (girls) and Randy Small (boys) have done an outstanding job with these teams this winter.

On Tuesday, March 9, 2010, Emerald Haan and Lindsey Meeker, two Senior students at Schoolcraft High School who have taken multiple online virtual learning classes, were called upon to testify in Lansing Michigan before the Senate Appropriations Subcommittee for School Aid. Principal Kolassa was also summoned to testify before the committee also. The purpose of these testimonies was to share with the Senate Committee how online learning works and how it works for students individually and how the concept of virtual online learning works for a small suburban school (i.e. Schoolcraft). The testimony was to give the legislators a practical knowledge of students and schools using virtual learning to enhance their educational experience. Schoolcraft High School is recognized statewide as a model example of using online learning to enhance their students' educational experience. This was a great experience for Lindsey and Emerald to see our legislature in action and be a part of the democratic process.

Michigan School Band and Orchestra Association, District XI held the High School Solo and Ensemble Festival on Saturday, February 6<sup>th</sup> at Schoolcraft High School. Approximately 25 schools and roughly 500 students participated. Thirty-five Schoolcraft band students formed Brass Quintets, Percussion Ensembles, duets and Solos. There were several students who were eligible to perform at State Festival including: Holly Wichman (Trombone Solo), Abbie Parker, Seth Rice, Janelle Valopik, Andy Covell (Saxophone Quartet); Brittany Johnston, Caitlin Hurst, Chelsea Craig and Lily Sagers (Clarinet Quartet). This is the 4th year Schoolcraft has held this event at our school.

The H.S. Choir had 10 events participate in Solo and Ensemble Festival this year, 5 out of 10 receiving 1's and 5 receiving 2's. The Choir participates in HS Festival during the time of this publication.

HS FESTIVAL - The High School Symphonic Band received straight 1's and all A's from the adjudicators at the MSBOA District VI Band Festival on Tuesday, March 9th. The Festival was held at Lake Michigan College at the Mendel Center. The festival brings in 50 different bands from the southwest Michigan Area.

*NEWS YOU CAN USE FROM THE DPW*

Brush pick up takes place on the last Monday of each month through the month of October. Please do not place your brush at the curb until the Wednesday before the pick up day.

Paper bagged leaves will be picked up through the end of April. Please call the office to let them know you need to have your bagged leaves picked up.

We continue our program of changing out water meters to upgrade our system. Once you receive notification regarding a meter change, please call us to get scheduled right away. It only takes a few minutes and there is no charge to you.

Please remember to keep your shrubbery trimmed back so it does not obstruct the sidewalks.

The DPW wishes you happy spring!

The Village of Schoolcraft  
PO Box 8  
Schoolcraft MI 49087  
Return Service Requested

PRESORTED STANDARD  
ECR  
US POSTAGE PAID  
SCHOOLCRAFT MI  
PERMIT NO. 16



Village of Schoolcraft Spring Newsletter 2010